


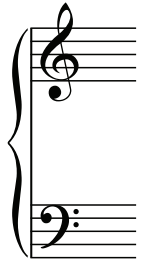
LINES AND SPACES

Music for the piano is written by placing notes on lines or spaces.

A group of five lines is called a **stave** or **staff**;

There is one for the high notes: 

and one for the low notes: 




This is called the **treble clef** and is used by the **right hand**.

This is called the **bass clef** and is used by the **left hand**.

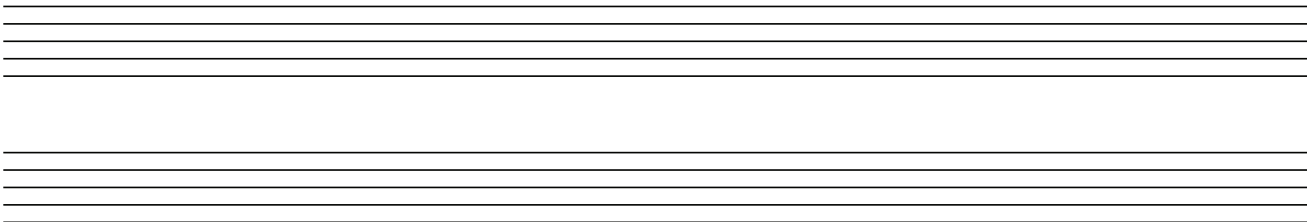
The notes we use to begin with are:

 = crotchet

 = minim

 = semibreve

Write a treble clef on one stave and a bass clef on another and place notes on lines or in spaces.



The tails of stems of the crotchet and minim go up until the middle line (which can be either) then down like this:

